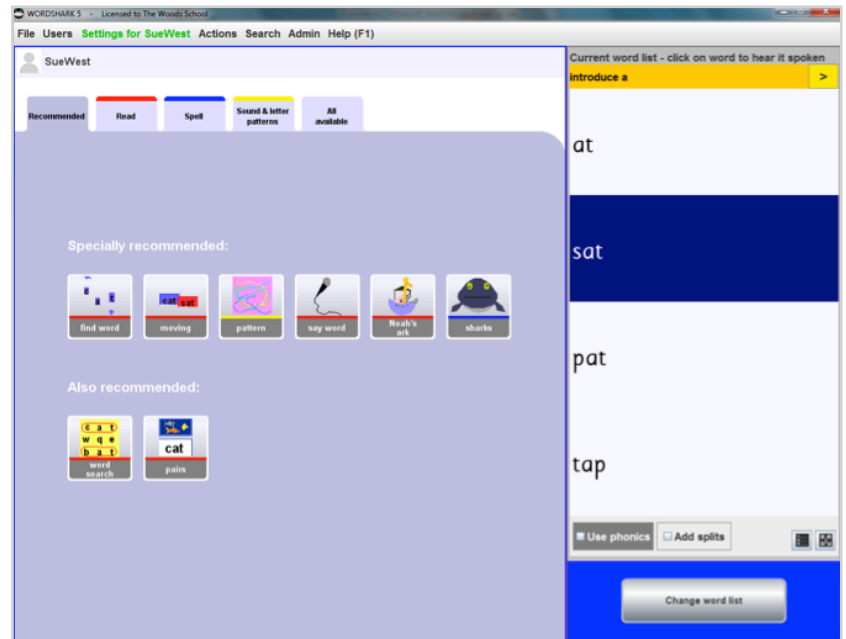


GETTING STARTED and games

Games screen and word lists screen

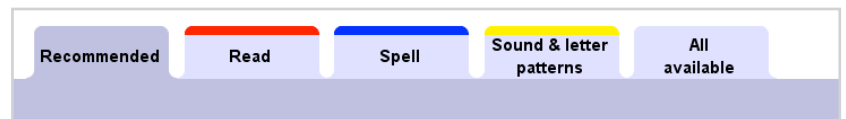
Games screen

This is the main home screen from which the students work. On first run it will open with the easiest list – try out a few games with this list.



The home screen for choosing games

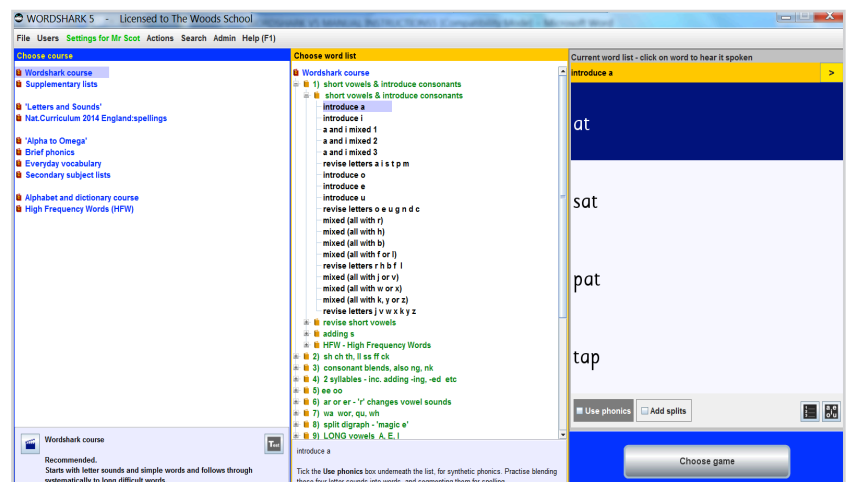
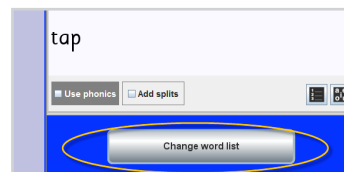
Recommended games are shown in a suggested order to play them. You can find extra games if you click on the coloured tabs:



Press **Esc** on the keyboard to end any game early.

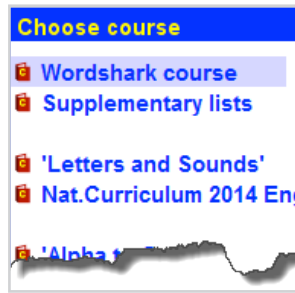
Word lists screen

To choose a new word list, click on *Change word list* (bottom right) to switch to the other home screen.



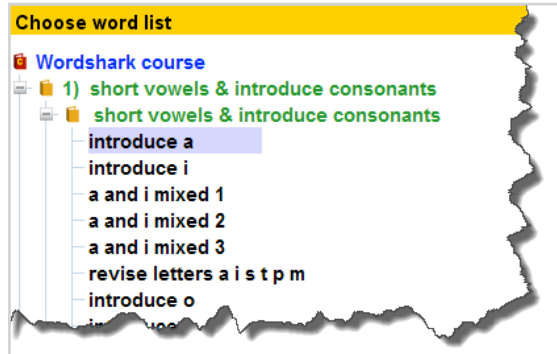
The home screen for choosing word lists

The different courses are on the left in blue. Stay with the *Wordshark* course for now.



The middle column shows the headings in this course. **Word list titles** are in **black**.

Click on the green headings to 'open them up' and find more lists.

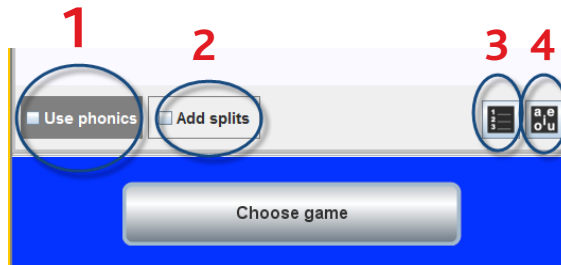


(Green headings, when highlighted give *Mixed words* – see later under 'Important features').

The word list you have selected appears on the right.

Note that there are useful tick boxes and buttons below the word list, especially the **Use phonics** button.

- 1 Use phonics
- 2 Add splits (for longer words)
- 3 Keep the same word order
- 4 Highlight vowels



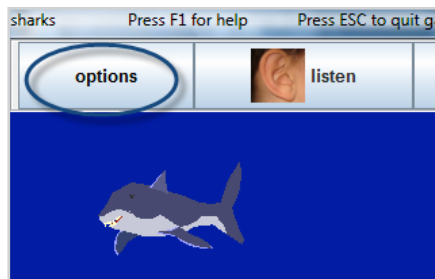
After choosing your list, **switch back to the games screen**. Click on *Choose game* (bottom right), ready to play the games.

You can move between adjacent lists by pressing the arrows.



Games options

Some games offer **options** (top left of games screens). These can alter the look and feel of a game. If an option has been changed, the word *options* appears in red. For example, in *Sharks* – if you find them difficult to catch – you can tick the box for *Automatic shark catching*.



The menu bar

The screen shot shows the menu bar including *Admin*. Students would not see *Admin* in their menu.

The table (right) gives a quick guide to the menu items.



File	For signing off/exit
Users	For signing on extra players during a session and also for list of Wordshark administrators
Settings for (Name)	Personal settings and for on-screen keyboard
Actions	Essential functions – including creating own word lists , recording words, printing lists, viewing your personal records
Search	A search facility for a word or letter pattern or title, for a course or for a game
Admin	For administrative functions including adding students, viewing students' progress, setting work , universal settings, back ups. <i>Admin</i> does not show in the menu bar for students
Help	For video tutorials, games instructions, printable manual (pdf), word lists and resources , updates

Microphones, headphones, on-screen keyboard

Microphones

Using a microphone (a built-in microphone or a simple plug-in one) can add to the multisensory experience, especially in the game *Say Sound* and its group of games, also when adding recordings to your own lists.

Headphones

Headphones are particularly recommended for work on phonics, and/or in a busy classroom environment.

Headphones are also necessary if no speakers are detected.

On-screen keyboard

This is essential for work on an **Interactive Whiteboard**.

Go to Settings for <name>\Screenpad.

It is also essential if you create a keypad with extra characters included.

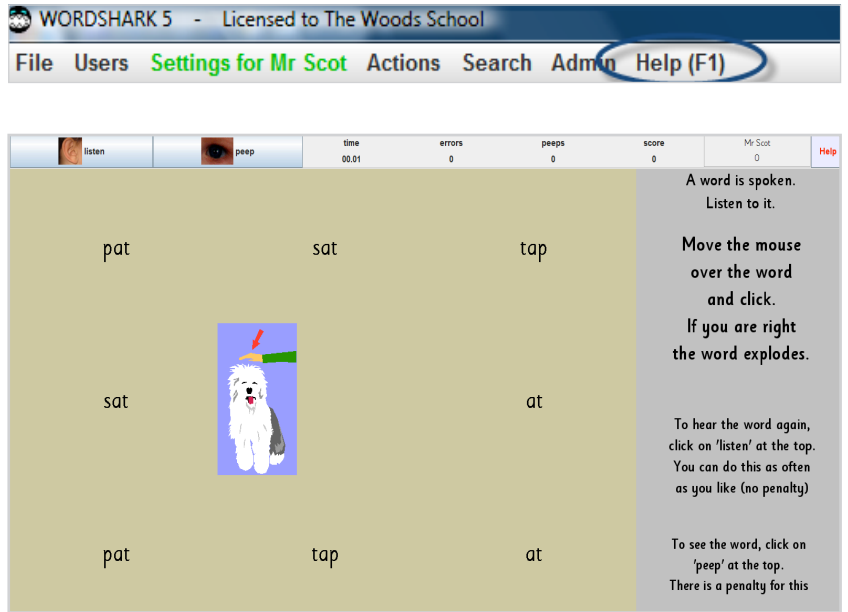
See also under games options for bringing up alphabet tiles on screen.

Help within the program

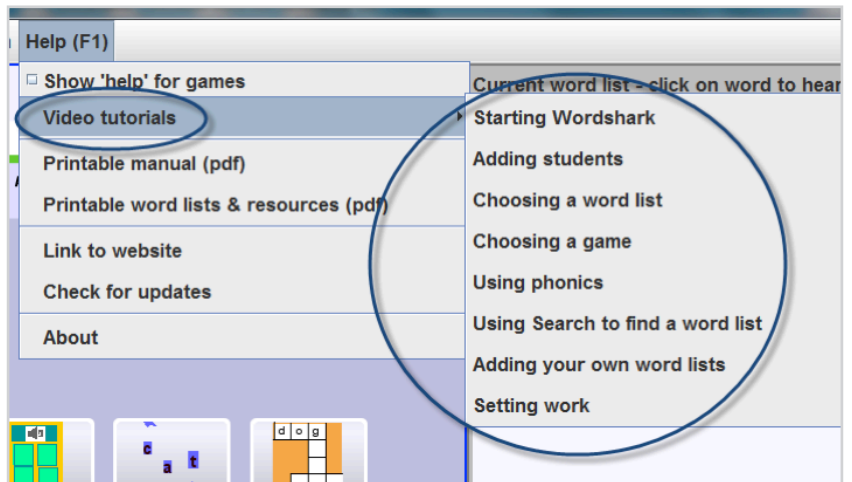
Click on *Help* and tick the box for *Show 'help' for games*.

This gives games instructions in a panel on the right during each game. Click on any section if you want it read aloud.

Turn off Help by clicking again on *Help* when no longer needed (top right).



Under *Help* you can select short **videos** on how to use Wordshark.



Teaching notes are often available, shown in the middle column under the word list titles.

